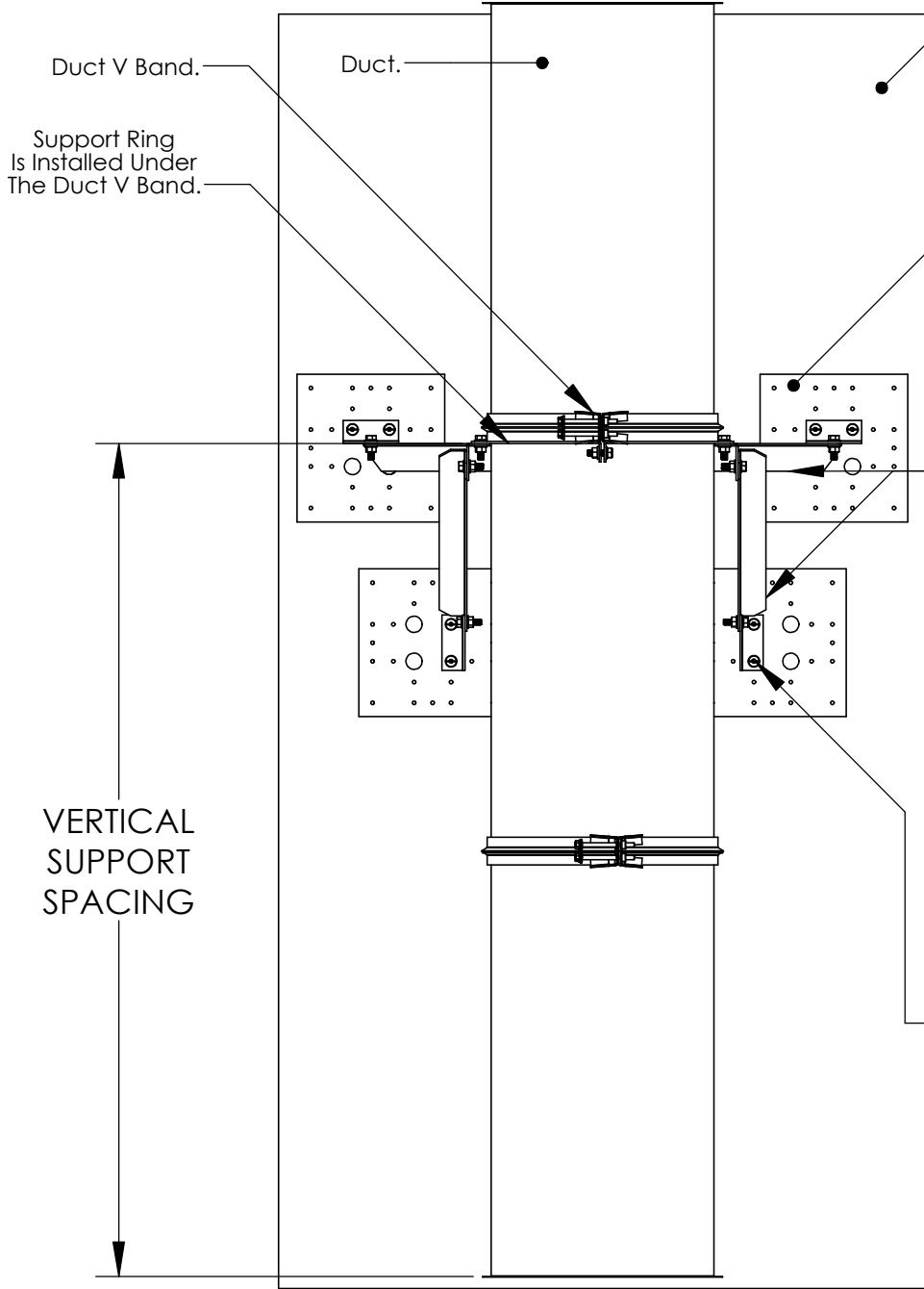


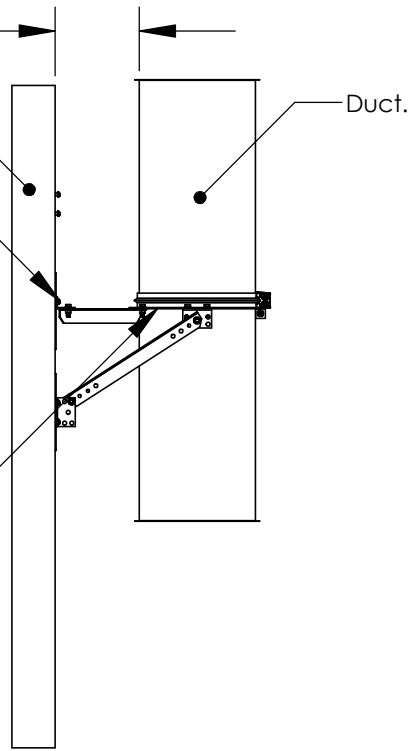
SINGLE WALL VERTICAL SUPPORT ASSEMBLY

5 THROUGH 24



must be 18" from combustible surface.

Uninsulated duct



Determine Wall Material Gypsum, Wood Or Concrete.

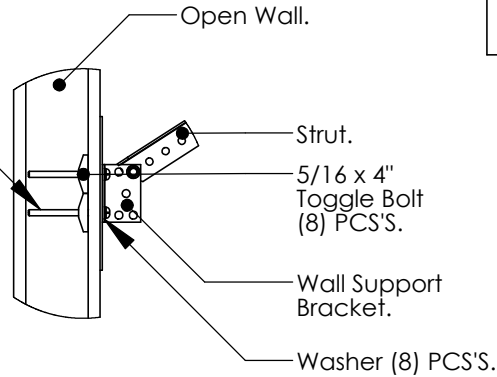
Solid Wall.
5/16 - 18 Mounting Hardware Supplied By Others.

Wall Support Plates Are Used To Distribute Support Weight When Installed On Gypsum.

Vertical Support Under V Clamp.

Support Struts Are used To Support The Duct Assembly & Connect To The Wall Support Plates & Brackets.

5/16 x 4" Long Toggle Bolts Are Used To Secure Support To Open Walls, Hardware Provided.



Locate The Support Bracket Assembly. Make Sure There Is No Interference & Clearance To Combustibles Is 18" Or The Duct System Is Wrapped Using A UL Listed Wrap.

Once Located Drill Clearance Holes & Install Hardware. 5/16 x 4" Long Toggle Bolts Are Supplied, If You Are Installing Into Concrete Use 5/16 Tapcons & Washers, If You Are Installing Into Wood Use 5/16 Lag Bolts & Washers.

The Duct V Band Should Be Installed Above The Support Ring To Allow Vertical Movement.